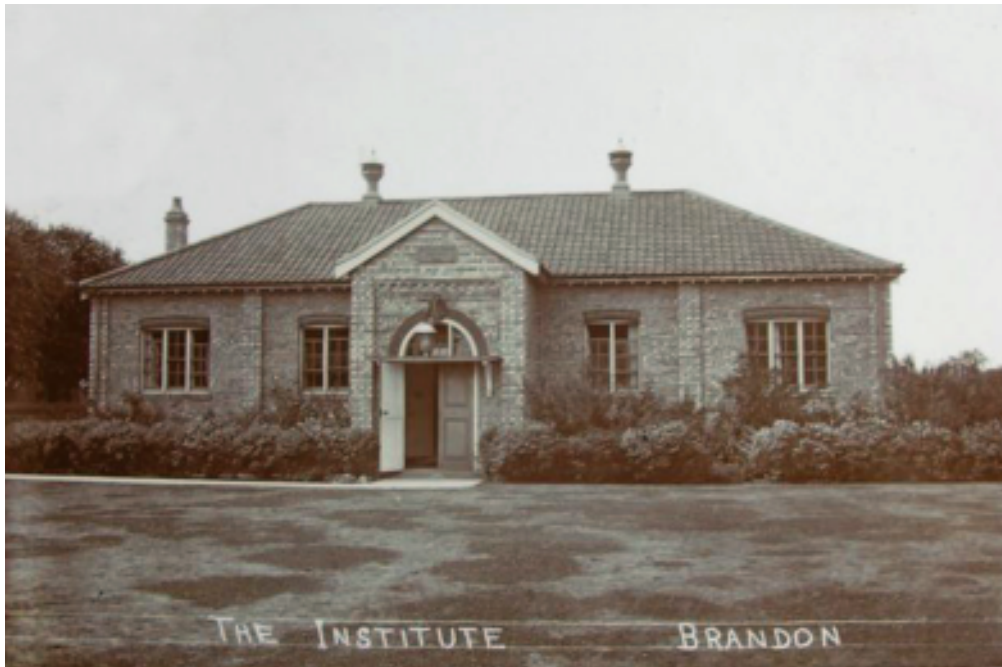


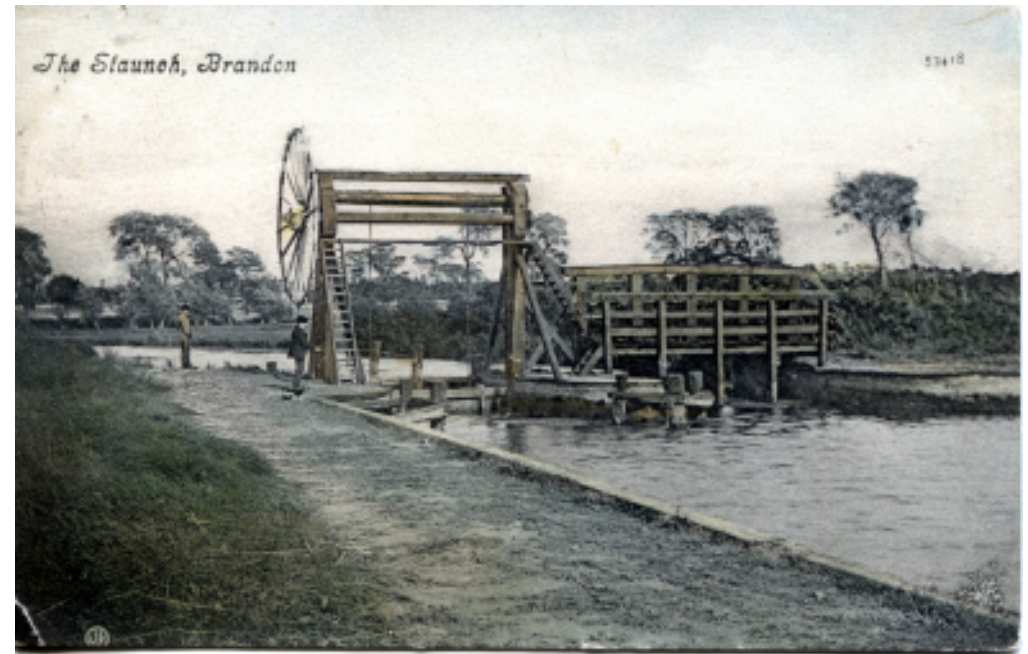


The Rectory, The Avenue, From the Gerry Moore collection



The Church Institute, postcard

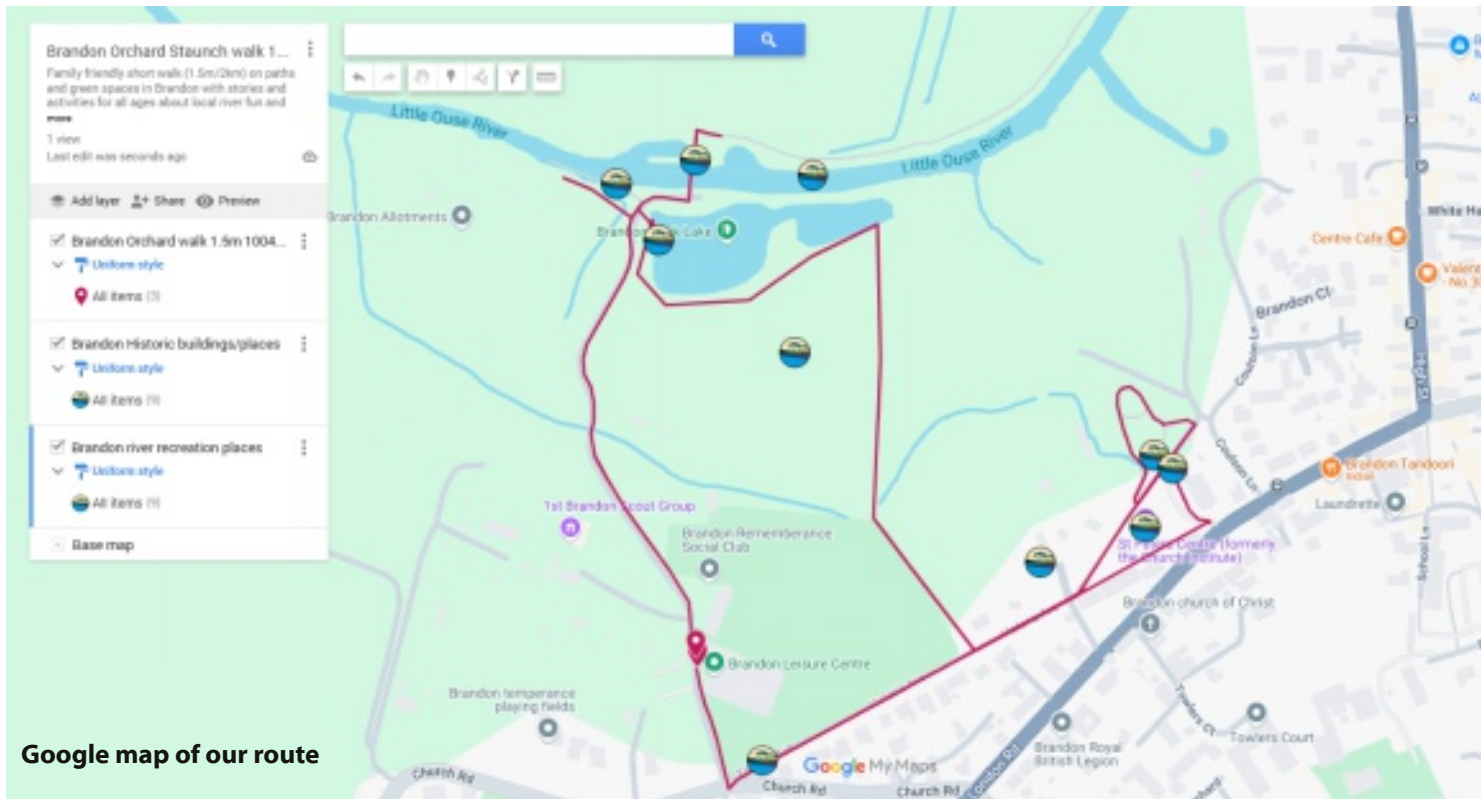
Brandon river and orchard
family walk: fun and wildlife,
guided walk 10 April 2025



Brandon Stauneh, colourised postcard, early 1900s, supplied by Ivan Cane

More information on Brandon's history:

The Brandon & District Local History Society <https://bdlhs.org/>
Visit Brandon Heritage Centre (April-Nov) <https://tinyurl.com/BHCentre>
Facebook group, Brandon, Suffolk - Down Memory Lane
<https://www.facebook.com/groups/1148869208535674/>
History of Brandon from Town Council <https://tinyurl.com/BTCHist>
Discoveries at Stauneh Meadow <https://tinyurl.com/HSSStMead>
Old Ordnance Survey maps <https://maps.nls.uk/view/120854390>
The river Little Ouse from the Breckland Society (Download)
www.brecsoc.org.uk/wp-content/uploads/2020/10/The-Little-Ouse.pdf
Brandon Creative Forum, www.facebook.com/BrandonCreativeForum
Legacy website for Brecks river recreation history <https://osbrecks.co.uk>



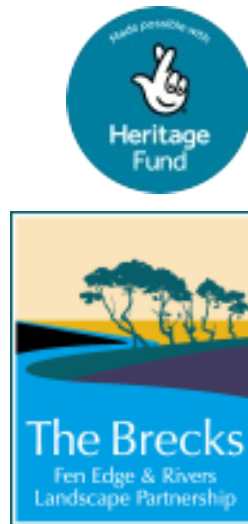
Google map of our route

See the route on a map, where you can click on the icons to see info on the historic spots: Point a smartphone camera to the QR code. Or go to <https://dub.sh/BrandoOrchMap>



Victoria Avenue, 2023, Imogen Radford

One of the river history walks in the Brecks guided by @OSBrecks volunteers, run by @TheBrecksLP, The Brecks Fen Edge and Rivers Landscape Partnership Scheme, supported by @HeritageFundUK. Contact: Imogen Radford, imogen36@gmail.com or bfer.admin@suffolk.gov.uk.



L
The Avenue
Cinema
c1930s
or 1940s

R
'The Old and
New Avenues'
c1900s

Far L
Children at the
'Leeches', 1957,
supplied by Pat
Baldwin

